

SOMEWHERE BECOMING RAIN  
CALUM MCCLURE



# SOMEWHERE BECOMING RAIN

24<sup>TH</sup> FEBRUARY — 8<sup>TH</sup> APRIL 2018  
GLASGOW PRINT STUDIO

## IN HIS FIRST MAJOR EXHIBITION WITH THE GLASGOW PRINT STUDIO, CALUM MCCLURE EXPLORES IDEAS OF: PLACE, TRANSIENCE AND NATURE IN HIS LATEST SERIES OF PAINTINGS AND PRINTS

The places where he walks and gathers images, through taking photographs, are predominantly parks and gardens, places that can be public or private; once private but now made public in the case of the country estates; places of botanical research or the private celebration of nature. All inspire differing modes of depiction and evoke contrasting atmospheres. They share in common that they are places we use for specific purposes, even if that is merely recreation, and are not landscapes in the traditional sense of the word, nor are they wildernesses. What interests him when in these places is usually something apparently simple, the shape of a branch overhanging a pool of water; the way rain falls; changing light or shadows patterning the ground. He does not make preparatory sketches or work *en plein air* over a period of time; in contrast he chooses to intensify the moment by using photography. These photographs are used as his initial stimulus and manipulated, blended and referred back to throughout his image making process.

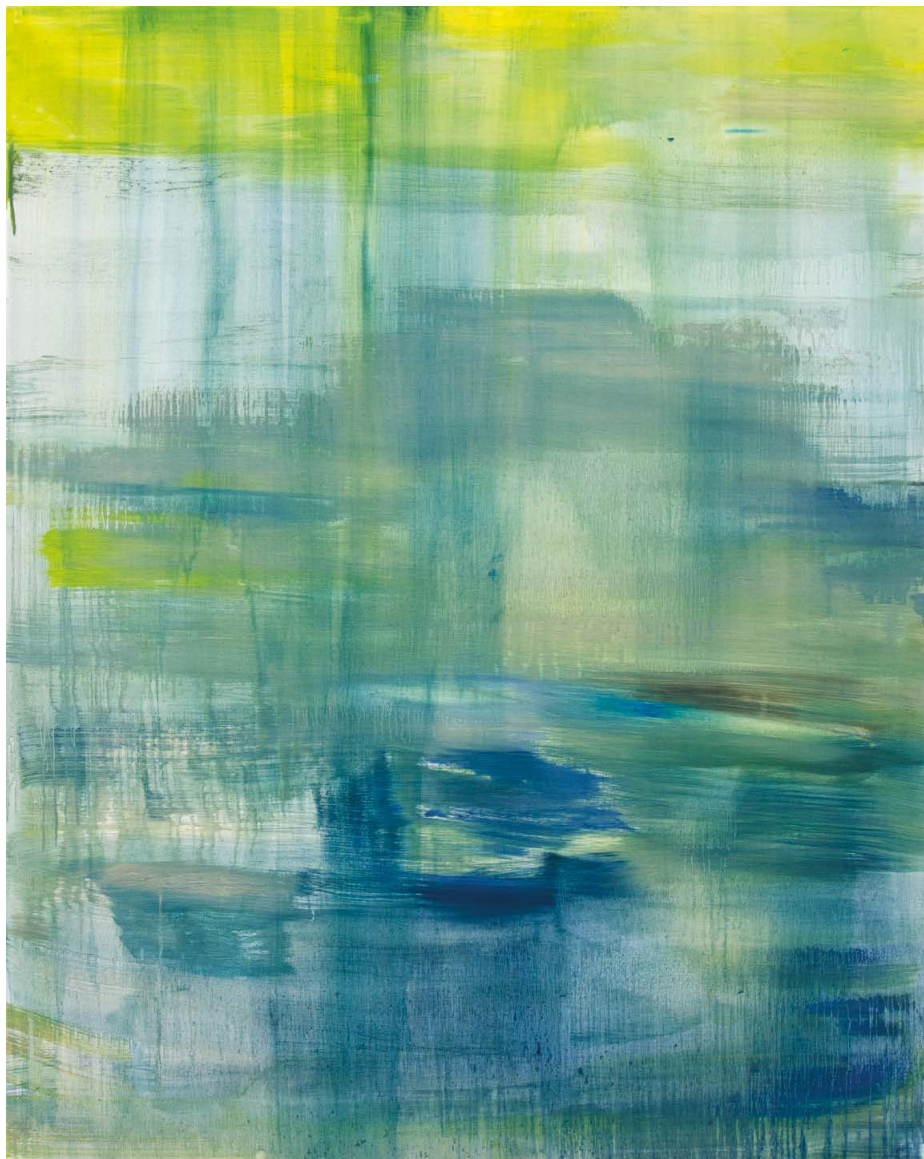
During his time collecting source material for the exhibition McClure was reminded of the momentary imagery used by Philip Larkin in his poem *The Whitsun Weddings*, its images described as if from a moving train. The pieces in the exhibition are by no means an illustration of the poem; rather, his paintings, monotypes and etchings explore the fleeting way we often perceive nature and place. The viewer is immersed in a world of bright yellows and various blues with disorientating vanishing points. Although some pieces are abstract, the initial image remains the subject of the piece and McClure never works in complete abstraction. Colour is thought about deeply and in relation to nature.

McClure also looks at the human emotion we attach to certain types of weather. In this exhibition rain is his main preoccupation. Pieces such as *Rain, Blue and Orange* study rain in abstraction, creating a mood of melancholy and disquiet. He is an artist who dreams as he sees and concentrates intensely as he paints, hopefully enabling others who view his work to be transported in a similar way. The images are positive, beautiful and lyrical, those of a precious environment to be nurtured, contemplated and celebrated.

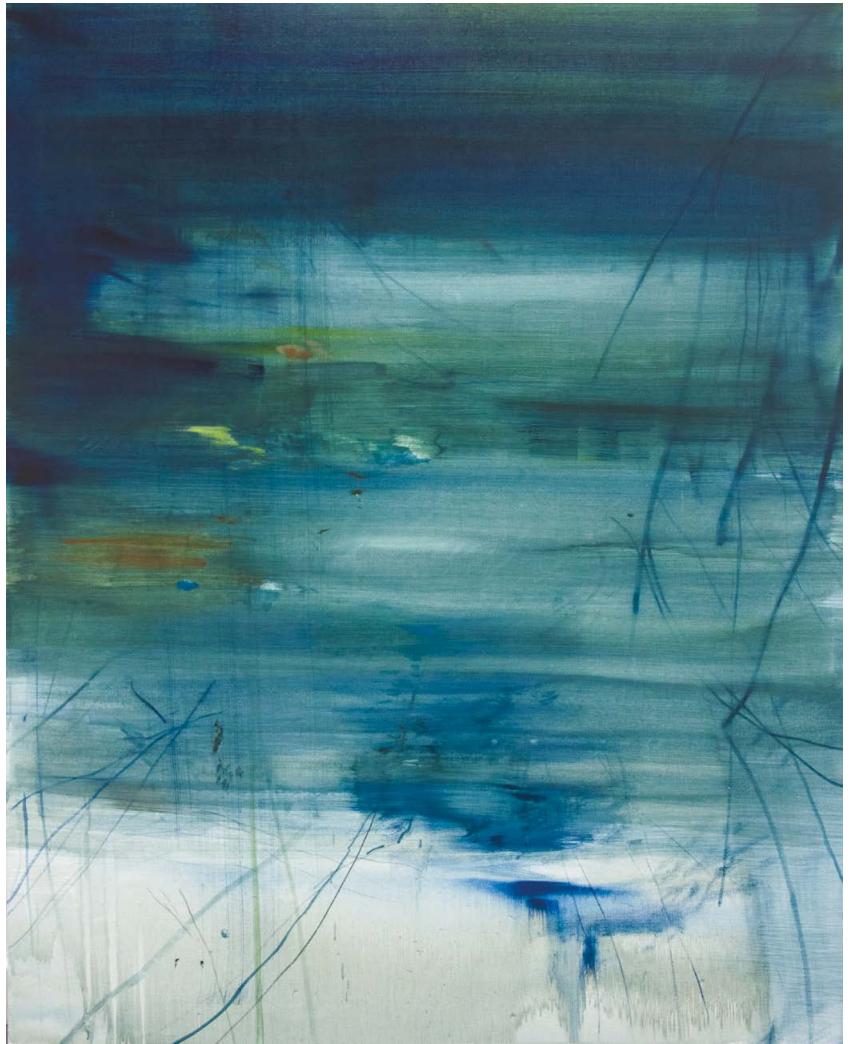
FOREST INTERIOR  
OIL ON CANVAS  
200 X 170CM



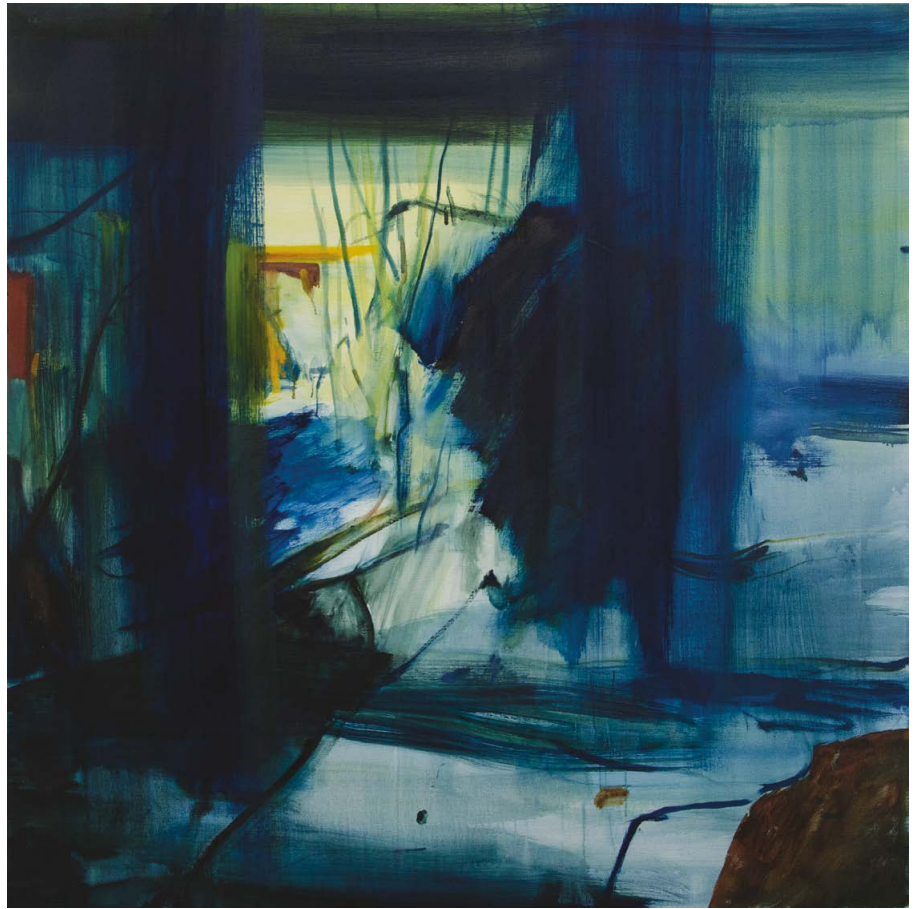
APRIL SHOWERS  
OIL ON CANVAS  
150 X 120CM



BLUE  
OIL ON CANVAS  
150 X 120CM



RAIN, CANONBURY  
OIL ON CANVAS  
120 X 120CM



TWO OVALS IN RAIN  
OIL ON CANVAS  
120 X 100CM



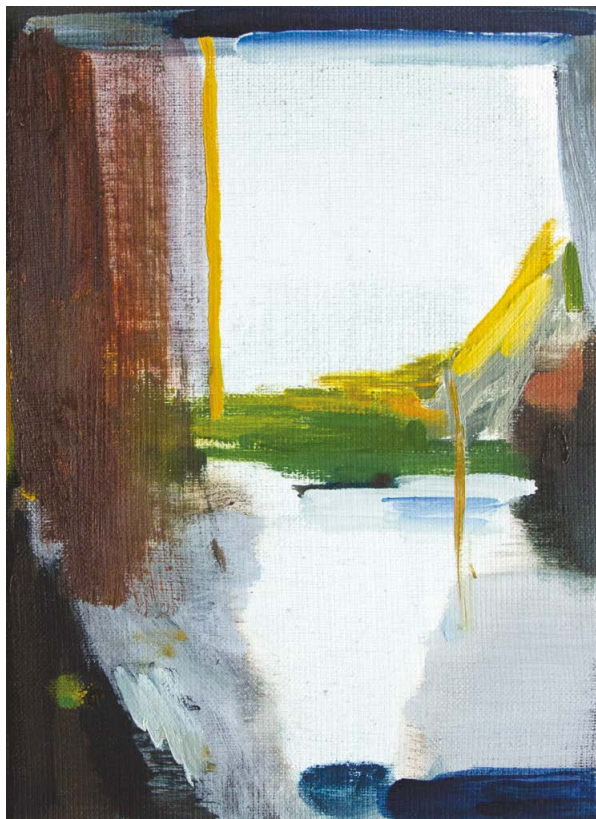
PENUMBRA  
OIL ON CANVAS  
30 X 24CM



LIGHT RAIN, HAMPSTEAD HEATH  
OIL ON BOARD  
24 X 30CM



RED RAIN, BENMORE  
OIL ON CANVAS  
24 X 18CM



JANUARY  
OIL ON CANVAS  
20 X 20CM



THE NIGHT GARDEN  
MONOTYPE  
92 X 92CM



JAPANESE COMPOSITION  
MONOTYPE  
92 X 92CM



WINDOW IN THE ESTORICK  
MONOTYPE  
35 X 35CM



DAY MOON, KEW GARDENS  
MONOTYPE  
42 X 27CM



BEHIND THE BACKS OF HOUSES  
MONOTYPE  
25 X 25CM



SHADOWS AND FALLING TREE, INVERMAY  
MONOTYPE  
25 X 25CM



BRANCHES NOCTURNE  
MONOTYPE  
17.5 X 17.5CM



CAMDEN LOCK IN THE RAIN  
MONOTYPE  
17.5 X 17.5CM



GREEN, YELLOW, RED  
MONOTYPE  
17.5 X 17.5CM



RAIN, BLUE AND ORANGE  
MONOTYPE  
17.5 X 17.5CM



RED TREE  
MONOTYPE  
17.5 X 17.5CM



WATERLOO PARK, NOCTURNE  
MONOTYPE  
17.5 X 17.5CM



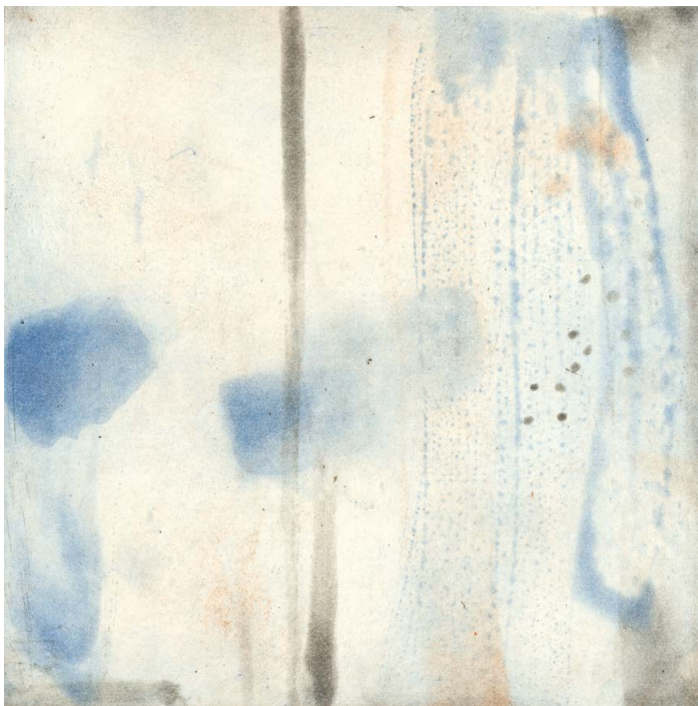
YELLOW AND STORM  
MONOTYPE  
17.5 X 17.5CM



PALE SHOWERS BLUE  
ETCHING  
20 X 20CM



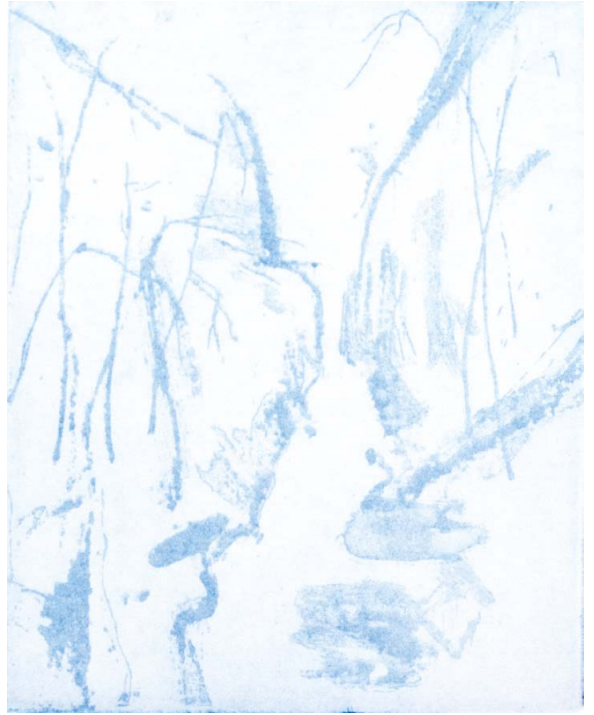
TEARS IN RAIN  
ETCHING  
20 X 20CM



BLUE ON BLACK  
ETCHING  
20 X 20CM



IN BLUE, WATERFALL  
ETCHING  
14 X 11.5CM



# INDEX

## PAINTINGS

FOREST INTERIOR  
200 X 170CM



APRIL SHOWERS  
150 X 120CM



BLUE  
150 X 120CM



RAIN, CANONBURY  
120 X 120CM



TWO OVALS IN RAIN  
120 X 100CM



PENUMBRA  
30 X 24CM



LIGHT RAIN, HAMPSTEAD  
HEATH 24 X 30CM



RED RAIN, BENMORE  
24 X 18CM



## MONOTYPES

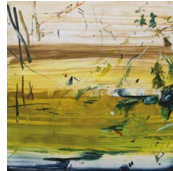
JANUARY  
20 X 20CM



THE NIGHT GARDEN  
92 X 92CM



JAPANESE COMPOSITION  
92 X 92CM



WINDOW IN THE ESTORICK  
35 X 35CM



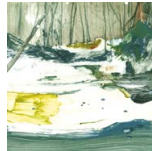
DAY MOON, KEW GARDENS  
42 X 27CM



BEHIND THE BACKS OF  
HOUSES 25 X 25CM



SHADOWS AND FALLING  
TREE, INVERMAY 25 X 25CM



BRANCHES NOCTURNE  
17.5 X 17.5CM



CAMDEN LOCK IN THE RAIN  
17.5 X 17.5CM



GREEN, YELLOW, RED  
17.5 X 17.5CM



RAIN, BLUE AND ORANGE  
17.5 X 17.5CM



RED TREE  
17.5 X 17.5CM



ETCHINGS

WATERLOO PARK,  
NOCTURNE 17.5 X 17.5CM



YELLOW AND STORM  
17.5 X 17.5CM



PALE SHOWERS BLUE  
20 X 20CM



TEARS IN RAIN  
20 X 20CM



BLUE ON BLACK  
20 X 20CM



IN BLUE, WATERFALL  
14 X 11.5CM





PRINTING EDITION OF  
'PALE SHOWERS BLUE'  
AT GLASGOW PRINT STUDIO



# BIOGRAPHY

B. 1987 IN EDINBURGH LIVING AND WORKING IN GLASGOW  
 2010: GRADUATED IN DRAWING AND PAINTING FROM EDINBURGH COLLEGE OF ART

## SOLO EXHIBITIONS

2017  
 GENERATIONS OF  
 COLOUR  
 Tatha Gallery,  
 Newport-on-Tay

2016  
 MONOTYPE  
 Glasgow Print Studio

NOCTURNES AND  
 BOTANICS  
 The Scottish Gallery,  
 Edinburgh

2014  
 REFLECTION  
 The Scottish Gallery,  
 Edinburgh

2013  
 MONOTYPES  
 The Scottish Gallery,  
 Edinburgh

2011  
 NEW PAINTINGS  
 AND DRAWINGS  
 The Scottish Gallery,  
 Edinburgh

## SELECTED GROUP EXHIBITIONS

2017  
 GOOD NATURE  
 Candida Stevens,  
 Chichester,  
 West Sussex

2016  
 SMALL IS BEAUTIFUL  
 Flowers Gallery,  
 London

FLY  
 Visual Arts Scotland  
 Edinburgh

OUT OF THE WOOD  
 Groundwork Gallery,  
 King's Lynn

SUMMER EXHIBITION  
 Royal Academy

RSA OPEN  
 Royal Scottish Academy,  
 Edinburgh

SUMMER EXHIBITION  
 Lemon Street Gallery,  
 Truro

THE VIEW FROM THE TRAIN  
 Glasgow Print Studio

PROMISED LAND  
 Tatha Gallery,  
 Newport

2015  
 CONVERGE  
 Visual Arts Scotland  
 Edinburgh

2012  
 SUMMER EXHIBITION  
 Mellerstain House Gallery

SUMMER EXHIBITION  
 (invited artist – curated  
 by Barbara Rae RA)  
 Royal Academy of Arts,  
 London

2011  
 NEW CONTEMPORARIES  
 Royal Scottish Academy,  
 Edinburgh

ART TORONTO  
 11th International Art Fair Toronto,  
 Canada  
 (w. The Scottish Gallery)

RSA OPEN EXHIBITION  
 Royal Scottish Academy,  
 Edinburgh

MIXED CHRISTMAS EXHIBITION  
 The Scottish Gallery,  
 Edinburgh

2010  
 GRADUATES 2010:  
 A selection of work by six  
 UK art college graduates  
 Albemarle Gallery,  
 London

RSA OPEN EXHIBITION  
 Royal Scottish Academy,  
 Edinburgh

MIXED CHRISTMAS EXHIBITION  
 The Scottish Gallery,  
 Edinburgh

## AWARDS

2011  
 The Jolomo Bank of Scotland  
 Award – for Landscape Painting

## PRESS & PUBLICATIONS

2012  
 Calum McClure on how winning  
 the Jolomo Award has changed  
 his life – Susan Mansfield.

2011  
 An Estate of Mind – Article by  
 Susan Mansfield following the  
 announcement of the Jolomo  
 Painting Award, The Scotsman,  
 25<sup>th</sup> June 2011

2010  
 ECA Degree Show Exhibition  
 review by Duncan Macmillan, The  
 Scotsman

# ARTWORKS DETAILS

## PAINTINGS

---

### FOREST INTERIOR

oil on canvas  
200 X 170cm  
£14,000

### APRIL SHOWERS

oil on canvas  
150 X 120cm  
£8,750

### BLUE

oil on canvas  
150 X 120cm  
£8,750

### RAIN, CANONBURY

oil on canvas  
120 X 120cm  
£7,250

### TWO OVALS IN RAIN

oil on canvas  
120 X 100cm  
£6,500

### PENUMBRA

oil on canvas  
30 X 24cm  
£1,150

### LIGHT RAIN, HAMPSTEAD HEATH

oil on board  
24 X 30cm  
£1,150

### RED RAIN, BENMORE

oil on canvas  
24 X 18cm  
£950

### JANUARY

oil on canvas  
20 X 20cm  
£850

## MONOTYPES

---

### THE NIGHT

GARDEN  
monotype  
92 X 92cm  
£4,500

### JAPANESE COMPOSITION

monotype  
92 X 92cm  
£4,500

### WINDOW IN THE ESTORICK

monotype  
35 X 35cm  
£1,150

### DAY MOON, KEW GARDENS

monotype  
42 X 27cm  
£1,150

### BEHIND THE BACKS OF

HOUSES  
monotype  
25 X 25cm  
£950

### SHADOWS AND FALLING

Tree Invermay  
monotype  
25 X 25cm  
£950

### BRANCHES

NOCTURNE  
monotype  
17.5 X 17.5cm  
£750

### CAMDEN LOCK IN THE RAIN

monotype  
17.5 X 17.5cm  
£750

### GREEN, YELLOW, RED

monotype  
17.5 X 17.5cm  
£750

### RAIN, BLUE AND ORANGE

monotype  
17.5 X 17.5cm  
£750

### RED TREE

monotype  
17.5 X 17.5cm  
£750

### WATERLOO PARK, NOCTURNE

monotype  
17.5 X 17.5cm  
£750

### YELLOW AND STORM

monotype  
17.5 X 17.5cm  
£750

## ETCHINGS

---

### PALE SHOWERS BLUE

etching  
20 X 20cm  
£400 unframed  
£450 framed

### TEARS IN RAIN

etching  
20 X 20cm  
£400 unframed  
£450 framed

### BLUE ON BLACK

etching  
20 X 20cm  
£400 unframed  
£450 framed

### IN BLUE, WATERFALL

etching  
14 X 11.5cm  
£200 unframed  
£250 framed

CALUMMCCLURE.COM  
CALUMEMCCLURE@GMAIL.COM  
@CALUMMCCLURE